



[SBVC Home](#)



Mathematics Engineering Science Achievement

[STEM Home](#) / MESA



Appointment with Jennifer Bjerke, MESA Director

Questions about joining MESA, academic support, or transferring in science, tech, engineering, and math? Schedule an appointment with the MESA Director by clicking [here](#).

What Is MESA?

MESA is the acronym for Math, Engineering, and Science Achievement. It is a statewide program and now also part of SBVC! California MESA is a college and career prep engine that propels student diversity and achievement in science, technology, engineering and math (STEM). MESA's community college level program produces a diverse population of transfer-ready students to advance their STEM educational journeys in 4-year university programs.

What are the MESA requirements?

- Students who are STEM majors and qualify for college level math
- Maintain a 2.5 G.P.A. overall
- Must complete MESA application
- Must attend MESA Orientation
- Must attend MESA workshops/presentation (at least 2)
- Must meet with mentors
- Must meet with MESA Counselor

What are the benefits of MESA?

- Academic and career counseling throughout the year
- Education planning for transfer to a 4-year institution
- Development of fundamental skills in biology, chemistry, mathematics, and physics
- Academic Excellence Workshops (AEWs)
- Individual and group mentoring
- Access to workshops, guest speakers, and field trips modeling STEM field careers
- Support for transfer and scholarships
- Develop professional relationships with professors and peers

Want more information? Let's talk, please contact:

Jennifer Bjerke, *Director & Instructor of Geography*

(559) 741 - 3870

jbjerke@sbccd.cc.ca.us

Physical Science 116

Dr. Carol Jones, *Faculty Sponsor & Instructor of Chemistry*

(909) 387 - 1697

carjones@sbccd.cc.ca.us

Health and Life Science 213

Tatiana Vasquez, *Faculty Sponsor & Instructor of Biology*

(909) 384 - 8555

tvasquez@sbccd.cc.ca.us

Health and Life Science 238

Armone Lochard, *Counselor*

(909) 384 - 4400 Ext. 8787

alochard@sbccd.cc.ca.us

Physical Science 127

Faye Epps, *Clerical Assistant*

(909) 215 - 4600

eepps@sbccd.cc.ca.us

Physical Science 111

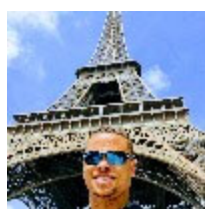


MESA's looking fab at 50! As our golden anniversary year progresses there will be many opportunities to

join in on the fun. Stay tuned. Welcome to the celebration and another 50 years of creating a diverse STEM workforce.



- [Apply to be a MESA student](#)
- [MESA Orientation Program](#)
- [MESA Guest Presentations and Workshops](#)
- [Student-Led Workshops \(Academic Excellence Workshops\)](#)
- [Faculty Workshop Sessions](#)
- [Field Trips and Conferences](#)
- [Scholarship, Research & Internship Opportunities](#)



Offline

Knock on Door

Armone Lochard

Title:

Counselor

MESA

Click [here](#) for instructions for online counseling.

[Google Map™](#)

[Campus Map](#)

San Bernardino Valley College

701 South Mount Vernon Ave.

San Bernardino, CA 92410

909-384-4400

A college of the [San Bernardino Community College District](#)

Copyright © 2020 San Bernardino Valley College.

[Accreditation](#) | [Tech Support](#) | [Careers at SBVC](#) | [Hire an SBVC Student](#) | [Accessibility](#)
[M&O Support](#) | [Annual Security Report](#) | [Donate to SBVC](#) | [Contact Us](#)

Select Language

Powered by [Google Translate](#)

Connect to SBVC [f](#) [t](#) [Instagram](#)

San Bernardino Community College District does not discriminate on the basis of age, color, creed, religion, disability, marital status, veteran status, national origin, race, sex, sexual orientation, gender identity or gender expression.

[Complaint Procedure](#)